

12mm TO 30mm COIN CELL HOLDERS

Single and Dual "Printed Circuit" Cell Holders for Lithium Coin Cells. Designed for easy battery replacement. Will accommodate diameters from 12mm to 30mm and heights from 1.6mm to 7.7mm. Some holders will accept more than two cells if they fall within the heights specified. Designed to accept: Duracell, Eveready, Panasonic, Ray-O-Vac, Sanyo, Varta, Toshiba, Seiko and other major battery manufacturers.

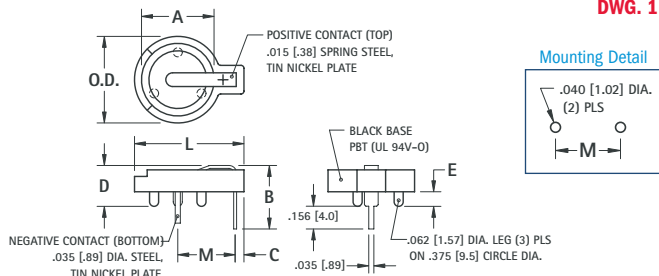
DESIGN ADVANTAGES...

- Low profile for high density packaging
- Contacts feature clearly marked polarities to help guard against improper insertion.
- Reliable spring tension assures low contact resistance
- Retains battery securely to withstand shock and vibration
- Unique notched slots assure quick and easy battery insertion and replacement
- Base material UL Rated 94V-0. Impervious to most industrial solvents
- Operating temperature range: -60°F to +293°F (-50°C to +145°C)
- Advanced air-flow design pattern enhances air circulation around battery

IDEALLY SUITED FOR...

- Computer memory, power transfer and back-up systems
- Video and telecommunications power back-up
- Preprogrammed video and electronic games
- Microprocessors and Microcomputer memory hold (desktop and laptop applications)
- Industrial and commercial security and alarm systems
- Communications power sources
- PC/104 applications

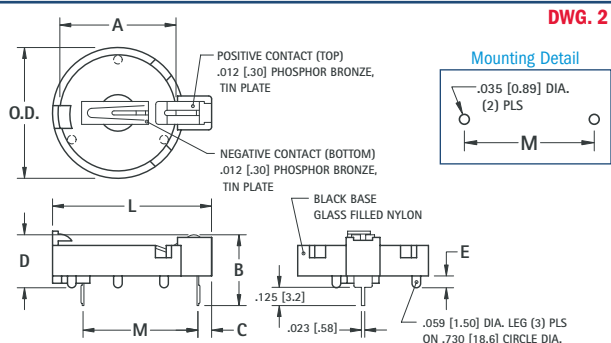
For 12mm to 16mm & "1/3N"



For 20mm



- Suitable for 2025 and 2032 cells
- Battery "Pop-in" design for compact applications
- Finger pressure lever disengages battery



For 20mm to 30mm



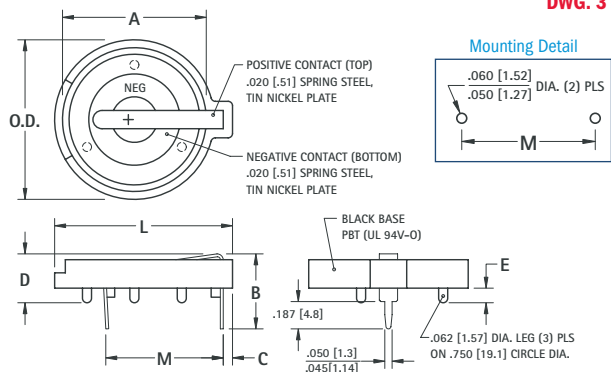
SINGLE CELL HOLDER (3-VOLT)

DUAL CELL HOLDER (6-VOLT)

NEW - SPACE SAVING DESIGN



- **Cat. No. 101** is designed to maximize PC Board Capacity
- Allows components to be placed underneath the holder
- Ideal when board space is more important than board height; such as PC/104 applicatons



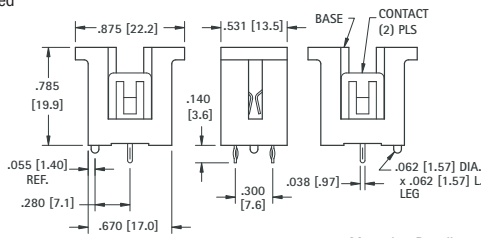
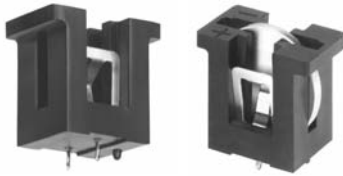
CAT. NO.	DWG. NO.	NO. OF CELLS	A	B	C	D	E	L	O.D.	M	CELL	BATTERY CROSS REFERENCE
499	1	1	.495 (12.6)	.695 (17.7)	.060 (1.5)	.580 (14.7)	.100 (2.6)	.750 (19.1)	.593 (15.1)	.393 (10.0)	"1/3N"	DL 1/3N, K58L, CR 1/3N
500	1	1	.495 (12.6)	.435 (11.0)	.060 (1.5)	.280 (7.1)	.100 (2.6)	.750 (19.1)	.593 (15.1)	.393 (10.0)	12mm	BR1216, CR1216, BR1220, CL1220, CR1220, BR1225
501	1	2	.495 (12.6)	.505 (12.8)	.060 (1.5)	.380 (9.7)	.100 (2.6)	.750 (19.1)	.593 (15.1)	.393 (10.0)		
502	1	1	.635 (16.1)	.460 (11.7)	.060 (1.5)	.285 (7.3)	.100 (2.6)	.897 (22.8)	.750 (19.1)	.463 (11.8)	16mm	BR1616, CR1612, CR1616, CR1620, CR1632*
502-3	1	1	.635 (16.1)	.505 (12.8)	.060 (1.5)	.312 (7.9)	.100 (2.6)	.897 (22.8)	.750 (19.1)	.463 (11.8)		
1066	2	1	.807 (20.1)	.485 (12.3)	.093 (2.4)	.363 (9.2)	.081 (2.1)	1.089 (27.7)	.906 (23.0)	.787 (20.0)	20mm	BR2025, CR2025, DL2025, BR2032, CR2032
101	3	1	.796 (20.2)	.593 (15.1)	.070 (1.8)	.374 (9.5)	.179 (4.6)	1.130 (28.7)	.896 (22.8)	.807 (20.5)	20mm	BR2016, CR2016, DL2016, BR2020, CL2020, BR2025, CR2025, DL2025, BR2032, CR2032, DL2032
103	3	1	.796 (20.2)	.513 (13.0)	.070 (1.8)	.335 (8.5)	.100 (2.6)	1.130 (28.7)	.896 (22.8)	.807 (20.5)		
106	3	1	.796 (20.2)	.513 (13.0)	.064 (1.6)	.335 (8.5)	.100 (2.6)	1.219 (31.0)	1.093 (27.8)	.807 (20.5)		
1026	3	2	.796 (20.2)	.630 (16.0)	.064 (1.6)	.452 (11.5)	.100 (2.6)	1.219 (31.0)	1.093 (27.8)	.807 (20.5)		
104	3	1	.911 (23.1)	.513 (13.0)	.060 (1.5)	.335 (8.5)	.100 (2.6)	1.150 (29.2)	1.000 (25.4)	.807 (20.5)	23mm	BR2320, CL2320, CR2320, BR2325, CR2325, DL2325, BR2330, CL2330, BR2335, CR2354**
107	3	1	.911 (23.1)	.513 (13.0)	.082 (2.1)	.335 (8.5)	.100 (2.6)	1.219 (31.0)	1.093 (27.8)	.807 (20.5)		
1027	3	2	.911 (23.1)	.630 (16.0)	.064 (1.6)	.452 (11.5)	.100 (2.6)	1.219 (31.0)	1.093 (27.8)	.807 (20.5)		
105	3	1	.935 (23.7)	.513 (13.0)	.064 (1.6)	.335 (8.5)	.100 (2.6)	1.219 (31.0)	1.093 (27.8)	.807 (20.5)	24mm	CR2430, DL2430, CR2450***, DL2450***, CR2477****
1025	3	2	.935 (23.7)	.630 (16.0)	.064 (1.6)	.452 (11.5)	.100 (2.6)	1.219 (31.0)	1.093 (27.8)	.807 (20.5)		
1025-7	3	1	.935 (23.7)	.681 (17.3)	.064 (1.6)	.503 (12.8)	.100 (2.6)	1.219 (31.0)	1.093 (27.8)	.807 (20.5)		
301	3	1	1.187 (30.1)	.513 (13.0)	.070 (1.8)	.335 (8.5)	.100 (2.6)	1.425 (36.2)	1.297 (32.9)	.807 (20.5)	30mm	BR3032

*For Cat. No. 502-3 (1) cell only. ** For Cat. No. 1027 (1) cell only. *** For Cat. No. 1025 (1) cell only. ****For Cat. No. 1025-7 (1) cell only.

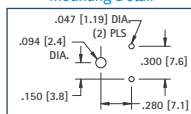
VERTICAL 20mm COIN CELL HOLDERS

This space saving vertical design features a rugged, lightweight body that mounts squarely and securely on PC boards for easy installation and replacement of batteries. Reliable spring tension assures low contact resistance.

- Accepts all major manufacturers' 20mm diameter batteries
- Molded notch prevents improper insertion of 2032 size cells
- Space saving design for high density packaging
- Retains cells securely, withstands shock and vibration
- Polarity clearly marked
- Mounts securely for wave soldering
- Temperature range -60°F to +293°F (-50°C to +145°C)



Mounting Detail



COMPACT

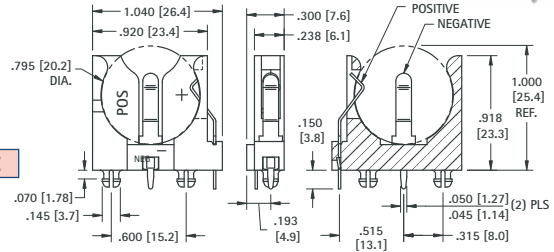
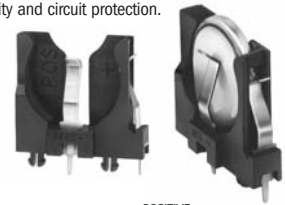
MATERIAL:

Contacts: .012 (.30) thick Spring Steel, Tin Nickel Plate
Base: PBT, UL Rated 94V-0

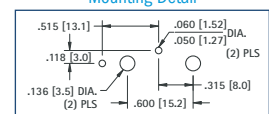
CAT. NO. 1067

A "unique" space saving design. The battery is installed vertically from the top. The contacts of this holder are polarized to assure proper continuity and circuit protection.

- Polarized holder
- Mounts securely for wave soldering
- Reliable spring tension assures low contact resistance
- Retains 20mm batteries securely to withstand shock and vibration
- Temperature range -60°F to +293°F (-50°C to +145°C)



Mounting Detail



SLIMLINE

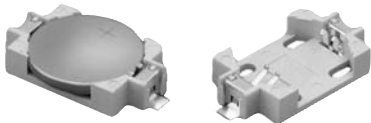
MATERIAL:

Contacts: .016 (.41) thick Spring Steel, Tin Nickel Plate
Base: PBT, UL Rated 94V-0

CAT. NO. 1065

LOW PROFILE SURFACE & THRU HOLE MOUNT COIN CELL HOLDERS

AVAILABLE ON TAPE AND REEL

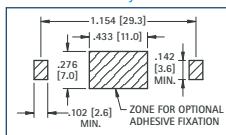


Designed for quick and easy installation and replacement of 1220 and 2032 coin cell lithium batteries. The contacts of these holders are polarized to assure proper continuity and circuit protection.

- Polarized Holder
- Retains cell securely to withstand shock and vibration
- Reliable dual spring contacts assure low contact resistance

2032 SURFACE MOUNT

Pad Layout

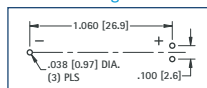


MATERIAL:

Contacts: .006 (.15) thick Phosphor Bronze
 Cat. No. 1060 - Gold Plate (Flash)
 Cat. No. 1059 - Tin Plate
Base: Glass Filled LCP, UL Rated 94V-0

2032 THRU HOLE MOUNT

Mounting Detail



AVAILABLE ON TAPE AND REEL

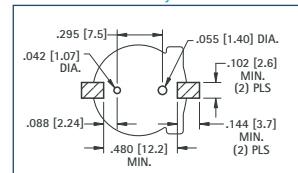


MATERIAL:

Contacts: .008 (.20) thick Phosphor Bronze, Gold Plate (Flash)
Base: Glass filled PPS, UL Rated 94V-0

1220 SURFACE MOUNT

Pad Layout



CAT. NO. 1056 (Bulk)

CAT. NO. 1056TR (Tape & Reel)

Tape & Reel Specs: 32mm wide; 20mm pitch; 13 inch reel (500 pieces per reel)

SURFACE MOUNT COIN CELL HOLDERS



AVAILABLE ON TAPE AND REEL

SMT Design - Holders for 20mm and 23mm Lithium Coin Cell Batteries

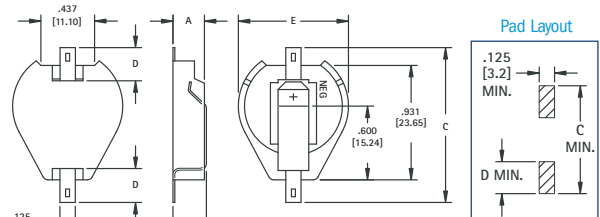
- Temp. range -60°F to 293°F (-50°C to +145°C)
- Ideal for memory back-up applications
- Polarity clearly marked (+)
- UL approved material, 94V-0
- Rugged construction, light weight
- Compatible with vacuum and mechanical pick & place assembly systems
- Low profile for high density packaging
- SMT solder tail with "Flow-Hole" design for increased joint strength
- Viewable solder tails assures reliable joint inspection
- Safe for all soldering & reflow operations
- All conductive polystyrene carrier tape meets ANSI/EIA - 481 standard

SMALL PAD PATTERN									
CAT. NO.	ON TAPE	CELLS	A	B	C	D	E	CELL	BATTERY
1061	1061TR	1	.256 (6.5)	.290 (7.4)	1.015 (25.8)	.156 (4.0)	.896 (22.8)	20mm	2016*, 2020, 2025, 2032
1062	1062TR	2	.375 (9.5)	.406 (10.3)	1.015 (25.8)	.156 (4.0)	.896 (22.8)		
1071	1071TR	1	.256 (6.5)	.290 (7.4)	1.015 (25.8)	.156 (4.0)	1.000 (25.4)	23mm	2320, 2325, 2330

*Cat. No. 1061 (1 or 2 cells); Cat. No. 1062 (3 cells)

LARGE PAD PATTERN									
CAT. NO.	ON TAPE	CELLS	A	B	C	D	E	CELL	BATTERY
1063	1063TR	1	.256 (6.5)	.290 (7.4)	1.250 (31.8)	.278 (7.1)	.896 (22.8)	20mm	2016*, 2020, 2025, 2032
1064	1064TR	2	.375 (9.5)	.406 (10.3)	1.250 (31.8)	.278 (7.1)	.896 (22.8)		
1073	1073TR	1	.256 (6.5)	.290 (7.4)	1.250 (31.8)	.278 (7.1)	1.000 (25.4)	23mm	2320, 2325, 2330

*Cat. No. 1063 (1 or 2 cells); Cat. No. 1064 (3 cells)



MATERIAL: Contacts: .015 (.38) thick Steel, Tin Nickel Plate **Base:** Nylon 46, UL Rated 94V-0
Tape & Reel Specs: 44mm wide; 32mm pitch; 13 inch reel (200 pieces per reel)

COIN CELL BATTERY HOLDERS